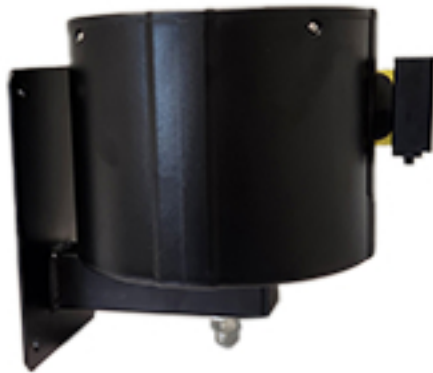


# WallPro 750 Installation

## Parts:

Wall Unit



4x Wall Unit Screws



Wall Receiver



2x Screws

## Instructions:

Step 1



Drill four 5/16-inch holes in the wall in the designated location for the wall mount.

Step 2



Position the wall mount against the wall and insert the wall mount screws into the four holes.

Step 3



Tighten the bolts to secure the wall unit in place.

Step 4



Screw the wall receiver into the receiving wall to complete the setup.